



GMT MONTHLY MEMBERSHIP PROGRESS REPORT

Results as of: 3/31/2019

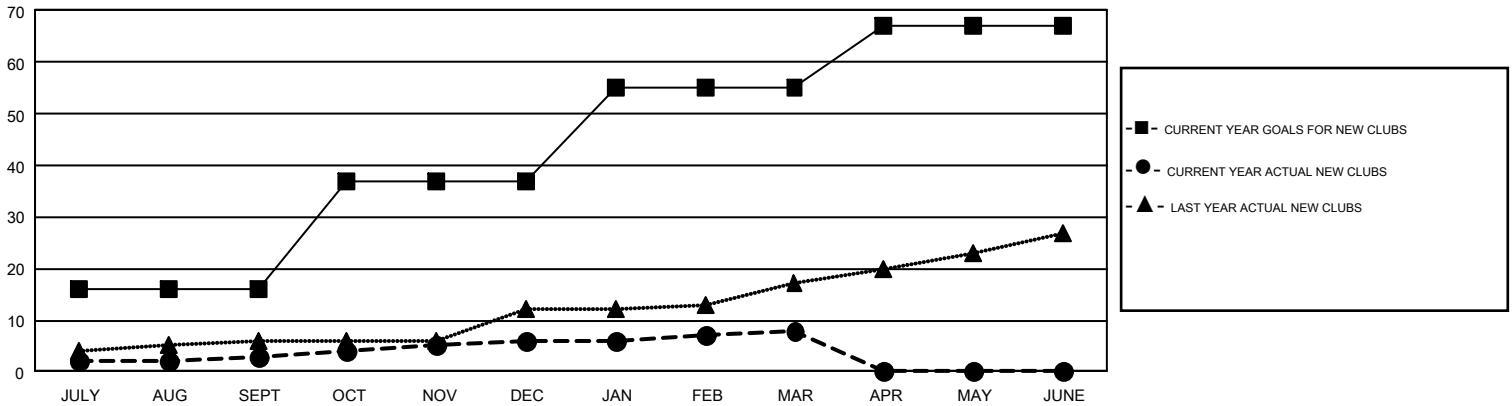
GMT Constitutional Area 1, Group H

GMT: HOWARD HUDSON

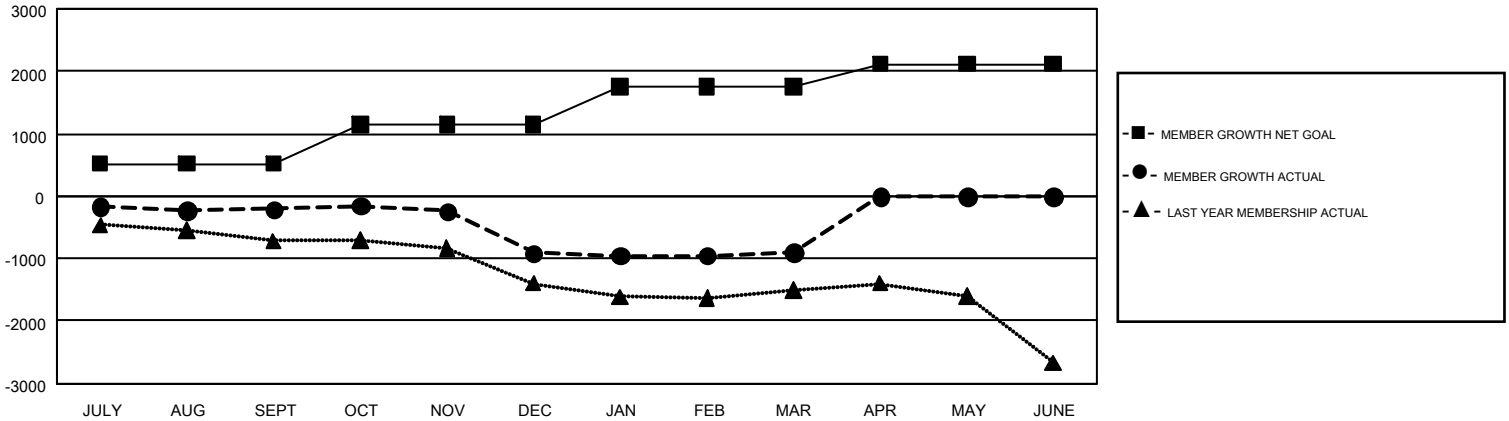
REPORT DOES NOT INCLUDE CLUBS IN UNDISTRICTED AREAS.

Clubs				Members			
RESULTS FOR 2018-2019				RESULTS FOR 2018-2019			
QUARTER	NEW CLUB GOAL	NEW CLUBS	DROPPED CLUBS	QUARTER	MEMBER GROWTH NET GOAL	MEMBER GROWTH ACTUAL	DROPPED MEMBERS ACTUAL (including transfers)
JULY/AUG/SEPT	16	3	12	JULY/AUG/SEPT	521	1,249	1,256
OCT/NOV/DEC	21	3	6	OCT/NOV/DEC	622	1,062	1,655
JAN/FEB/MAR	18	2	11	JAN/FEB/MAR	608	1,151	1,023
APR/MAY/JUNE	12	0	0	APR/MAY/JUNE	365	0	0

GOALS AND ACTUAL NEW CLUBS CUMULATIVE



GOALS AND ACTUAL MEMBERS CUMULATIVE



DROPPED CLUBS: 29	812 CLUBS OF 1,397 ADDED 1 OR MORE NEW MEMBERS	<u>GENDER DISTRIBUTION</u>
<u>DROPPED MEMBERS</u>		MALE 22,754 (61.83%)
DECEASED 362		FEMALE 14,048 (38.17%)
CLUB CANCELLED 151	CLICK HERE FOR CUMULATIVE MEMBERSHIP DATA	TOTAL FAMILY UNIT MEMBERS 7,540
OTHER 3,417		FAMILY MEMBERS PAYING HALF DUES 3,899
TOTAL 3,930		